

This document is exclusive MARECO LUCE s.r.l., is strictly prohibited disclosure or reproduction, even partial, as well the use of without written consent of MARECO LUCE s.r.l..The company reserves the right to change models, dimensions and materials at any time without notice.

## PRODUCT DATA SHEET

### Maia

**Code : 1008182M**

#### PRODUCT FAMILY

- Outdoor residential LED luminaire for direct wall mounting or recessing (IP65)

#### MATERIALS CHARACTERISTICS

- Housing in moulded translucent PC (polycarbonate)
- Recessed box in techno-polymer (included)
- Painted frontcover in moulded PC (polycarbonate)
- Coating with a pretreatment (Phosphochromating method) to ensure high protection against weathering
- Silicone gaskets
- A2 stainless steel screws

#### COLOUR

- Metallic grey RAL 9006
- Anthracite RAL 7016 textured
- White RAL 9003

#### LIGHTING CHARACTERISTICS

- LED's lighting source in fixed position
- Immediately ON at 100% of light flux
- Monochromatic strip Led (5cm)
- Strip led SL200LBC20/ES

#### WIRING CHARACTERISTICS

- LED's module 0,7W
- Built-in driver (24V driver output)

#### INSTALLATION AND MAINTENANCE CHARACTERISTICS

- Luminaire for wall recessing with recessed box (included)
- Interchangeable front cover
- The gear compartment is protected by a silicone gasket which seals against the wall surface
- Do not remove the grommet
- Ordinary and extraordinary maintenance not necessary

#### DIMENSIONS

- 135x85x50mm

#### TECHNICAL SPECS

- Led's consumption: 0,6W
- Luminaire consumption: 0.7W
- Power factor: 0.7
- Type of Led's: Strip led SL200LBC20/ES
- Step MacAdam: 3
- Lifetime Led's: 30Kh
- Lifetime Driver: 30Kh
- Warranty: 3 years

#### TECHNICAL SPECS 4000K

- Led's output: 123lm@tc25°C
- Luminaire output: 87lm@ta25°C
- Led's efficiency: 204lm/W
- Luminaire efficiency:124lm/W

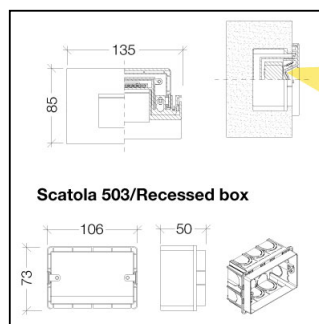
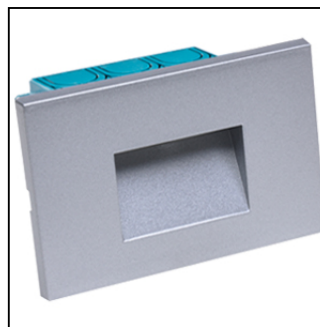
#### TECHNICAL SPECS 3000K

- Led's output: 118lm@tc25°C
- Luminaire output: 84lm@ta25°C
- Led's efficiency: 197lm/W
- Luminaire efficiency: 119lm/W

Rev. 6 -28/03/2023

#### Details

- Conformity with EU Directives
- Double insulation/class II
- IK08
- RG1
- CRI>80
- IP 65



220-240V 50/60Hz 0.7W					
CE		IK08	RG1	CRI ≥ 80	IP65

